

RAFAEL CHAVEZ TORRES

VALES Y MAZURKAS
para banda

FLISCORNO ALTO II EN MI \flat

CARLOTA - VALS

ALESSANDRO BARES
Edición crítica



FA
Facultad de
Artes

EAM
Escuela de
Artes Musicales

CARLOTA - VALS

Rafael Chavez Torres

Introducción. Andante moderato

15

20

Allegro moderato

ff *cresc.* *f* *p* *pp* *ff* *seco* *murriendo*

rall. *p cresc.*

Detailed description: This block contains the musical notation for the introduction. It starts with a treble clef, key signature of two sharps (F# and C#), and common time (C). The first staff has a 4-measure rest followed by a half note, then a 7-measure rest followed by a half note, and ends with a half note chord marked *p cresc.*. The second staff (measures 15-19) continues with chords, marked *cresc.*, *f*, *p*, and *pp* with an upward arrow and the word *murriendo*. The third staff (measures 20-24) changes to 2/4 time and features a *ff* chord, followed by a *pp* chord, and then a *ff* chord with an upward arrow and the word *seco*. The piece concludes with a double bar line.

Vals n.1

15

25

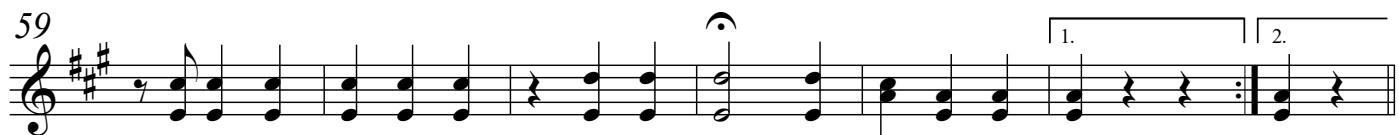
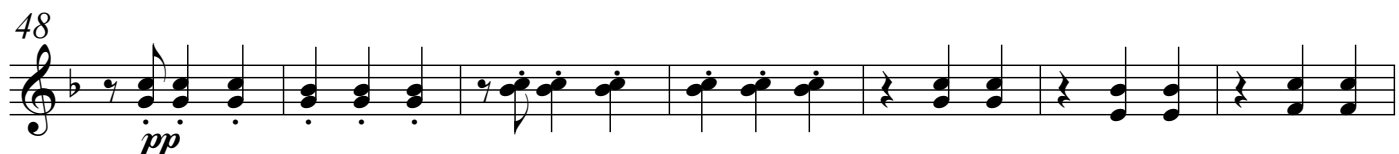
33

42

51

mf *ritard.* *a tempo* *Fin* *ff* *p* *rall.* *cresc.* *a tempo* *f* *p* *ff*

Detailed description: This block contains the musical notation for 'Vals n.1'. It starts with a treble clef, key signature of two sharps, and 3/4 time. The first staff (measures 1-14) has an 8-measure rest followed by a half note, then a half note, and ends with a half note marked *mf*. The second staff (measures 15-24) continues with chords, marked *ritard.* and *a tempo*, and ends with a half note marked *f*. The third staff (measures 25-32) features a *f* chord, followed by a *ff* chord, and then a half note marked *p*. The fourth staff (measures 33-41) has a *ff* chord, followed by a *p* chord, and then a half note marked *Fin*. The fifth staff (measures 42-50) continues with chords, marked *rall.* and *a tempo*, and ends with a half note marked *f*. The sixth staff (measures 51-59) features a *p* chord, followed by a *ff* chord, and then a half note marked *ff*. The piece concludes with a double bar line.

*Vals n.1 da capo al fin***Vals n.2**

[Vals n.3]

Final